



# Phoenix FS1250E Series Titan Security Fire Safe

The Phoenix Titan is a modern, compact, High security, fire resistant safe designed to meet the need for residential and business use.

- **Fire Protection** - Tested to the American underwriters UL 72 class 350 – 1hr fire test standard, providing 1Hr fire protection for paper documents and 1hr fire protection for CD's and memory sticks to Swedish SP specification.
- **Security Protection** - The safe is recommended for an overnight cash risk of £2,000.00 or £20,000.00 valuables\*.
- **Fixing** - Ready prepared for floor fixing, with fixing bolts for concrete floor supplied.
- **Locking** - Fitted with a high quality digital lock programmable with users own code up to 8 digits. Colour coded LCD display confirms status of battery and input codes at all times.
- **Alarm** - To warn of attack or unauthorised entry the integral security alarm activates and emits a high volume siren to deter possible criminal action
- **Colour** - Finished in a high quality scratch resistant paint Ral9003 White.



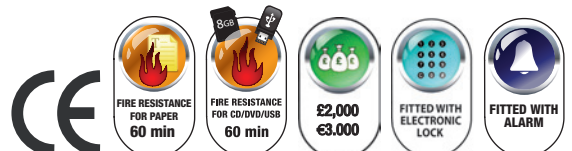
Titan FS1252E



Titan FS1253E



Titan FS1251E

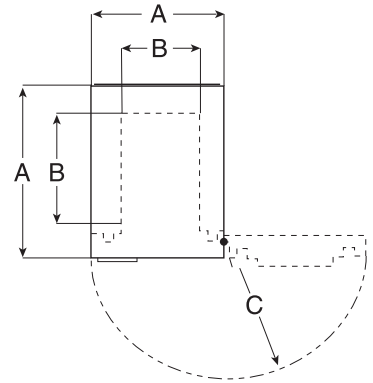


\*Ratings are approximate only and may vary due to area conditions and location. Please check with your underwriter.

The FS1250E Series body is constructed from galvanised steel plate with a virtually airtight recessed curvature door, which prevents fire and smoke damage to the contents. The door is secured using a high security electronic lock with programmable user and manager codes up to 8 digits in length.

The Phoenix FS1250E series is ready prepared for basefixing to the floor with bolts supplied. The added security offered by this method will deter even the most experienced criminal.

60 minutes fire protection at temperatures of 927°C for paper documents to International Standards UL 72 class 350 - 1hr and cd/dvd fire protection to SP specification. The safe is also drop tested from 10 metres to simulate falling through the floors of a burning building or being buried under a collapsing building.



● **Dimensions stated as:**

- A External height x width x depth
- B Internal height x width x depth
- C Door swing
- D Weight
- E Capacity

● **Titan FS1251E**

- A 300mm x 420mm x 360mm
- B 180mm x 295mm x 225mm
- C 375mm/45mm
- D 28 kg
- E 12 litres

● **Titan FS1252E**

- A 487mm x 345mm x 400mm
- B 358mm x 215mm x 265mm
- C 315mm/45mm
- D 42 kg
- E 20 litres

● **Titan FS1253E**

- A 530mm x 460mm x 480mm
- B 393mm x 323mm x 300mm
- C 360mm/45mm
- D 75 kg
- E 38 litres

**DEALER'S STAMP**

All weights and sizes are approximate.

All Phoenix Fire Safes come with a Free lifetime 'after the fire' replacement warranty and a full two year materials and labour warranty.

Phoenix policy is one of constant improvement. We therefore reserve the right to alter any part of the specification achieved in this publication without incurring any obligation.



Certificate No. 1059

FS1250E / 05 11 GB